



AN INVITATION FOR CONTINUED COMMUNITY INNOVATION

MICHAEL FISCHER, MD, MS

DIRECTOR & FOUNDER, NARCAD

CHIEF, SECTION OF GENERAL INTERNAL MEDICINE

BOSTON MEDICAL CENTER

BOSTON UNIVERSITY SCHOOL OF MEDICINE

DISRUPTION AS OPPORTUNITY:

OUR DISCOVERIES INFORM FUTURE SUCCESS

- What have we **learned**?
- How do we determine how well different **adaptations work**?
- How will this help us think about **future innovations**?
- **Continuing to adapt** is critical: combining proven best practices with new creative approaches





NARCAD ADAPTING TO DISRUPTION

- We're offering **more virtual trainings and learning opportunities** than ever before
- Our team can look at the big picture, but **you** are all on the ground **leading the charge**
- We're looking at **new approaches to in-person support and training** to meet your needs
- Tell us where **you** want to go!

A decorative graphic on the left side of the slide. It features a light blue background with several white 3D-style arrows pointing in various directions. One prominent red 3D-style arrow points upwards and to the right, positioned above the main text area.

HEARING YOUR STORIES

- You understand your programs' **unique contexts**
- Some changes may work only in **certain settings**
- We need to understand where **new universal lessons** are emerging

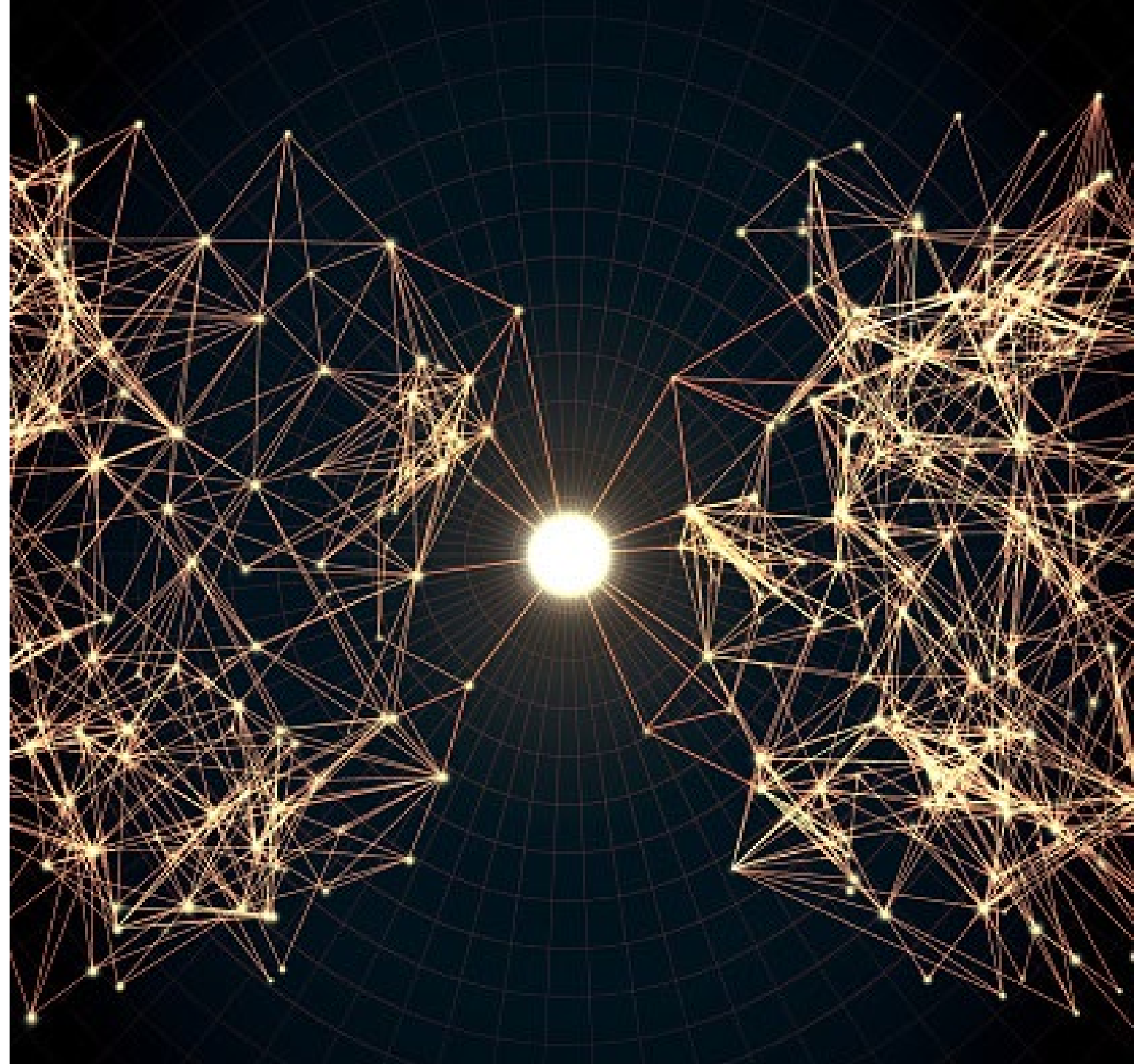
SETTING THE BAR HIGH

- You've been **forward-thinking** in your approaches to AD
- Our job is to create space for you to **learn and share** with each other

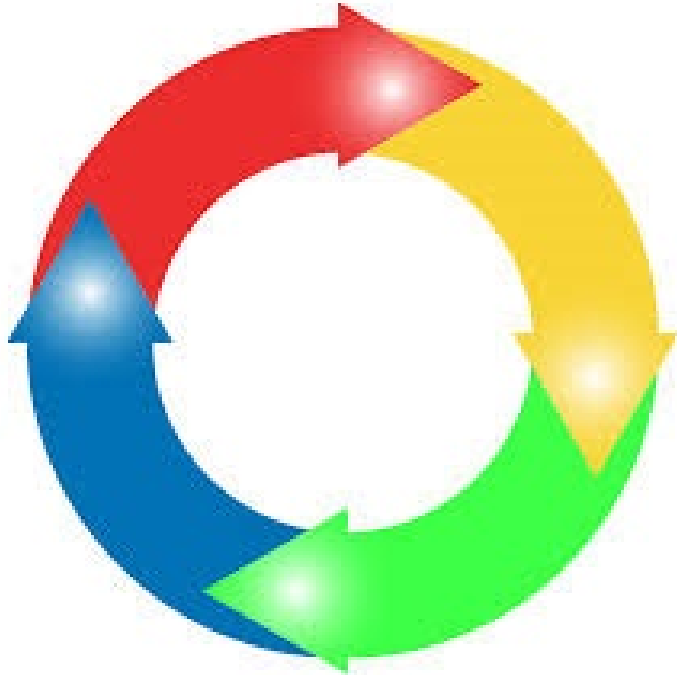


LEARNING TOGETHER

- We want to learn about what innovations you've been leading, and we want to **assess your innovations** with you!
- There are **opportunities** for you to **partner with us** to do this.



EVALUATING SUCCESS



- **Assessing innovations** is critical to generate valuable knowledge
- Overlap of **program evaluation** and **formal research**
- “What is a **successful experiment?**”
- Every innovation **teaches us something!**



EVERY INTERVENTION CAN CREATE CHANGE

We must:

- **Ask challenging questions**
- **Be rigorous**
- **Consider equitable impact**

LESSONS FROM THE DIGITAL DIVIDE

- Health system rapidly transitioned to virtual care for patients
- Failed to create pathways for equitable patient access
- We need to be intentional and consider impact when developing interventions





ENTHUSIASM FOR FUTURE EXPLORATIONS

- Everyone here is at a **different stage** in their AD journey
- NaRCAD2022 is all about **collaboration, partnerships, learning, and celebrating successes**
- But for now, let's focus **our excitement** on the amazing program over the next 3 days!